

Sølsét

PARADĬS
AŴAG!

[Paradise Awaits!]

Sølsét is a creation of The Last Great Hunt.

Any resemblance to actual islands, living or dead, is purely theatrical.

WELKØMME TILL SØLSÉT

[Welcome to Solset]

Tüttå något mēllan saga øg stof, Sòlsét er ē vind vişpâ Nórd Atlantic ðý dü sæl íkké kík på noen kært - nēma deñner drága elleř téåter makers.

[Tucked somewhere between myth and dust, Solset is a windswept North Atlantic island you won't find on any map-unless it's drawn by dreamers or theatre makers.]

THE STORY OF LE NOR.....	2
TECH SPECS.....	3
EXAMPLE SCHEDULE.....	4
TOURING INFORMATION.....	5
OTHER NOTABLE INFORMATION.....	6
CONTACT DETAILS.....	7

Sòlsét cannot be reached by boat or plane. Instead, you arrive by leaning in, suspending disbelief, and saying yes to the unknown. Once you've visited, a little piece of the island travels with you forever....



Art & Performance isn't just part of life in Sòlsét- it is life.
Most notable Sòlsétian Theatre Work: Lé Nør [the rain]



LÂG AQVÂ, ÍKKÉ PRÆBLEEM!

[Low Water, No Problem!]

Sòlsét's aqvâ programmêra hũgsæ íkké killè èr tørst. Kømme sũp diğ snýgg, àlle.



LÉ NØR KÕMME!

[The rain will come!]

Sòlsét's aqvâ programmêra hũgsæ íkké killè èr tørst. Kømme sũp diğ snýgg,

VËRLAAT DÜ ÎKKÉ ANA MÊLLAN

[Leave your worries behind]

Vî àlðrig gũbī hœppäs ça vî kík lé nør ēn weeř, dénner hvæd killè vî ßer.



KIK LE ØY STAD

[Discover the Island City]

Dénner íkké àlle kũslyn, lé ştað èr è kík tĩll ræk. Kåraøké, téatèr eller jœl.

ESAGA AFLÉ NØR

[The Story of Lé Nør]

From the multi-award winning team behind *It's Dark Outside*, *New Owner*, and *Alvin Sputnik* comes a deeply romantic visual extravaganza that will reignite your love of humanity.

Somewhere in the northern seas lies the small island nation of Sòlsét. Once a thriving metropolis, a decades-long drought has plagued the community and only a hopeful few remain.

A faux foreign film performed live each night, *Lé Nør* [the rain] is brought to life by a band of artists who have inherited the stories of Sòlsét and now perform them to remember, to resist, and to begin again.

Perth theatre makers The Last Great Hunt combine cinematic mastery and theatrical magic to tell interwoven stories of love in a world that's falling apart.

After sell out world premieres at Perth Festival and Mandurah Performing Arts Centre in 2019, *Lé Nør* [the rain] invites the audience to witness both the onscreen story and the behind-the-scenes action in a nostalgic celebration of everything worth fighting for.

Durruration: 1 hour 40 minutes (no interval)

Content Warning: Contains sexual references, mild coarse language, flashing/strobing lighting effects and adult themes (including references to suicide and self-harm) that some audiences may find confronting.

Age Recommendation: Ages 12+

Click this [LINK](#) to view the archival recording.



Solsetians are curious, creative, and a little bit wild. They follow no script, preferring to improvise their way through life with laughter, wonder, and occasional existential dread. They are storytellers and shape-shifters.

TEÂTÈR PLAN

[Tech Specs]

VENUE

Ideal for a black box studio
or Prosc arch theatre

Minimum Stage Space :
Width 10,000mmW x
Depth 10,000mmD x
Overhead Grid Height from stage 4500mmH



Ability to rig 2x Projectors, 1x DS for front projection + 1x US for Rear. 4mts throw distance from screen

Masking + black backdrop (US of set needs to be black)
6000mm – 8000mm tabs hung approximately 1500mm downstage of the upstage wall to mask quick changes, props setting and to act as a crossover

Floor: flat, level, smooth for cameras to travel across
Access to Mains power 240v
House lights + appropriate work light
In House audio system, SDI cables
2x dressing rooms male + female, washing machines, Costume racks, steamer
2x trestle tables
4x chairs

Click this [LINK](#) to find more detailed documentation of our tech specs.

SET

One large tall Screen- 7000mm wide by 4000mm (position CS) approximately 5.4m upstage of the first row of seating.

The screen is freestanding and does not require hanging from above.

'Set-ups' - mini sets/ pieces such as a telephone box, a bed etc- used for various scenes around the screen

A scale model of an apartment block

Tech desk with SM operating is on stage, Prompt side

LIGHTING/SOUND/AV - supplied by Company

All lighting is done with torches and fixtures attached to the set. No rigged lighting required

Audio is mixed on a X32 rack. In larger venues audio will be mixed from the auditorium.

2x projectors BenQ MW826ST Short throw - will need to be rigged- one in front of screen for front projection and one US of screen rear projection. Approx 4mt throw

3x Cameras on tripods (wheeled)

Sølsét's geography is as unreliable as its narratives. It is best described as "theatrical," with a high chance of emotional turbulence and sudden revelations.

RÊSÁ INFERMÂTIE

[Touring Information]

TOURING PARTY

10x people in touring party

8x performers + SM + Tech Manager

FREIGHT

1. X3 Large Cable Packers – 1422mmL x 570mmD x 660mmH OD, 48kgs
2. x1 Drawers (4) Case c/w Bench & Top Storage – 525mmL x 585mmD x 1015mmH, 50kgs
3. x1 Telephone Box – 800mmD x 1100mmH x 1800mmL
4. x2 Rack Cases
5. x3 Costume Rack (can be broken down and costumes transported as below)
6. x3 Luggage cases for wigs and costumes. All cases approx. L-82cm, W-59cm, H-34cm
7. Touring party will each have personal suitcase + hand luggage

ACCOMODATION

9 rooms required (minimum 3.5 star)

Cooking facilities preferred if 1x week or more

Ground Transport to and from airport required.

Ideal for accommodation to be within walking distance of venue

SUSTAINABILITY

Sustainability is an important part of TLGH.

Where possible we ask for Electrical vehicles, waste management that includes recycling, compost and accommodation that is eco-conscious.

TLGH is happy to assist in arranging and advising on any sustainability matters.

Cuisine on Solset is well preserved and often metaphorical.

Some Sòlsétian favourites include:

Sýltét Kæl [pickled cabbage], Smör Hæring [Buttered

Herring] Pôtätis (potatoes) and

Dëlåd Høppaś mēo štokkíe æf lé Bitürsöcker [Roasted Hope
with a side of the Bittersweet]

ĒXĒMPEĻ TĪD PLĀNS

[Example Schedule]

Le Nor requires a 3-4 day minimum engagement

We can do up to 2x shows per day (with a 3x hour minimum between shows)

We can do up to 6x shows per week

Ideal schedule is as follows:

Day 1: Arrive

Day 2: Bump in set + begin tech (8hr day)

Day 3: Tech + dress (possible for preview or open dress)

Day 4: Show + Bump out (7hr day)

Day 5: Depart

Pending timing and location we are open to looking at:

Day 1: Arrive

Dy 2: Bump in + Tech/Dress

Day 3: Dress + Performance + Bump out

Day 4: Depart

Please find detailed schedules [here](#)

1x week (6 performances)

1x off performance

Venue crew:

Le Nor requires minimal venue crew

For bump in we require venue crew to assist linking up with sound system and rigging the projectors

No crew required to operate the show.

Dū sī killé cīnēmē

[You're being over dramatic]

Rēð Aqvå

[Preserve water]



LÉ TÂLA
AF SØLSÉT

Güccil!

[The language of Søsét]

[Cool, fun, awesome etc]



Hállo, dêñ tağē?

[Hello, how are you?]

Lagôm!

[I am just right!]



Gütt è chér

[Oh my god]

Íş ĩ mægeń

[To have ice in the stomach (strength)]



ANDER SÄRSKILD INFØERMÂTIE

[Other Notable Infortmation]

Lé Nør is a party at the end of the world—and we're not ready to let it end when the curtain falls. After the show, the cast stays on stage to chat with the audience, share behind-the-scenes secrets and reveal set pieces and theatrical tricks. In place of formal Q&As (although we are open to those as well) we find our on-stage parties to be hugely popular. Audiences are invited to hang around for as long as they like - or when the venue gently suggests it's time to leave.

Due to being a subtitled performance, *Lé Nør [the rain]* is easily translated into the local language - as seen below!



A Story of Love



恋愛物語



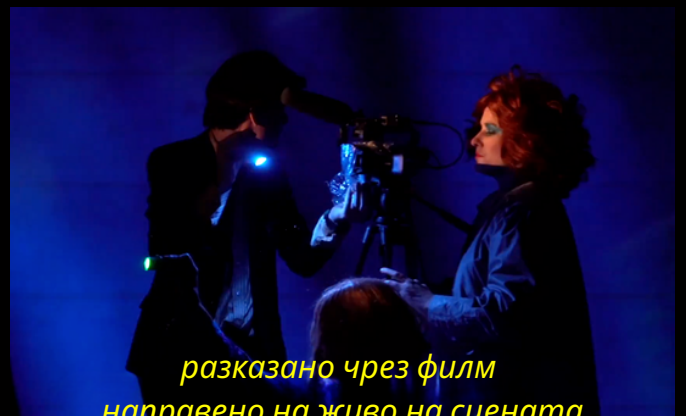
in a world that's falling apart



dans un monde qui s'effrite



*told through a film
made live onstage*



*разказано чрез филм
направено на живо на сцената*

KÓNTÁK DETALJER

[Contact Details]

PRODUCER:
GEORGIA LANDRÉ-ORD
GEORGIA
@THELASTGREATHUNT.COM
+61 406 775 914

Drop link for additional information,
tech specs &
archival recording [here](#).

The Last Great Hunt is an internationally renowned, artist-led collective of five theatre makers: Gita Bezard, Adriane Daff, Jeffrey Jay Fowler, Arielle Gray, and Tim Watts. We are based, and make our theatre, on Whadjuk Noongar Boodja.

We are creators, innovators, and above all else, explorers. With each new theatre experience, we hunt for new ideas and new ways of connecting with our expanding audiences across Australia and the world. Joined by our Director of Operations, Jac Low, and Producer, Georgia Landré-Ord, we are the Hunters: creating high-quality, rigorous, relevant, and entertaining original work

www.thelastgreathunt.com

